

# Saf-T-Vise Corrosion Monitoring

The Safest Choice Under Pressure



Biofuels | Chemicals | Crude Oil | Natural Gas | Petroleum | Water



# Corrosion Monitoring &

**Sentry Saf-T-Vise®** corrosion monitoring products and trainings empower corrosion monitoring and chemical teams to make real-time decisions regarding their pipelines.

Operators are protected from pressure, corrosion, vibration fatigue and process leaks with products that are manufactured and tested to 1.5x Maximum Operating Pressure (MOP) and compliant to the following requirements:

- NACE (AMPP) MR0175 / ISO15156
- ASTM
- CRN
- CE (PED) and the PHMSA Mega Rule (Section 192 & 195)

Don't get caught with products installed on your systems not rated to the design and operating pressures. Each **Sentry Saf-T-Vise®** is marked with the Sentry logo and backed by 30+ years of experience with expert training and material tracing available.

## STV-LP1 SERIES

- 750 psi (52 bar) MOP\*\* at 100°F (38°C) (safe hand insertion)
- 2000 psi (207 bar) MAP\* at 100°F (38°C)
- 316L SS construction
- PTFE seal
- 1 inch NPT pipeline connection
- 3/8 inch insertion rod/shaft
- Patented locking collet
- Integrated safety chain



## STV-LP2 SERIES

- Up to 1000 psi (69 bar) MOP\*\* at 100°F (38°C) (safe hand insertion)
- 4000 psi (275 bar) MAP\* at 100°F (38°C)
- 316L SS construction (other alloys available)
- PTFE or graphoil seal
- 1/2 through 2 inch NPT or flanged pipeline connection
- 1/4, 3/8 and 1/2 inch insertion rod/shaft
- Up to 6 ft insertion length
- Patented locking collet
- Integrated safety chain



## STV-HP1 SERIES

- 5000 psi (344 bar) MAP\*/MOP\*\* at 100°F (38°C)
- 316L SS construction (other alloys available)
- PTFE or graphoil seal
- 1/2 through 2 inch NPT or flanged pipeline connection
- 1/4, 3/8 or 1/2 inch insertion rod/shaft
- Up to 20 ft insertion length
- Low profile
- Patented locking collet
- Safety cap with indicator



## STV-HP2 SERIES

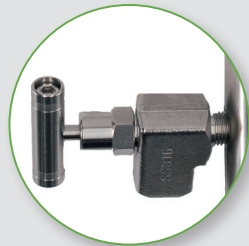
- 5000 psi (344 bar) MAP\*/MOP\*\* at 100°F (38°C)
- 316L SS construction (other alloys available)
- PTFE or graphoil seal
- 3/4 or 1 inch NPT or flanged pipeline connection
- 3/8 inch insertion rod/shaft
- 9 inch (23 cm) or 15 inch (38 cm) insertion lengths
- Patented locking collet
- Integrated insertion tool also acts as safety cap



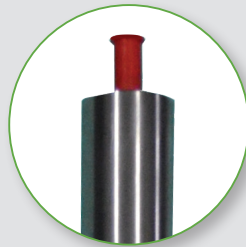
# Chemical Optimization



SAFETY CHAIN



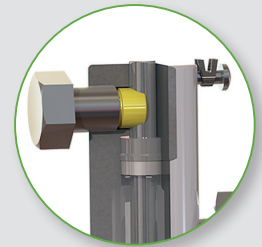
BLEEDER VALVE



SAFETY CAP



WELDED SAFETY STOP



PATENTED LOCKING COLLET

## STV-XH SERIES

- 10,000 psi (689 bar) MAP\*/MOP\*\* at 100°F (38°C)
- 410 SS construction (other alloys available)
- PTFE seal
- One piece flanged pipeline connection
- 1/4 inch insertion rod
- Low profile
- Patented locking collet
- Safety cap with indicator



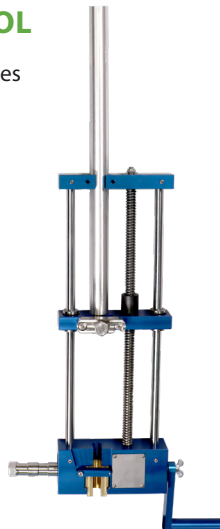
## STV-ER & STV-LPR

- Remote telemetry and portable data logger options available
- 3000 psi (207 bar) MOP\*\* at 100°F (38°C)
- All process wetted parts 316L SS construction (excluding probe electrode)
- 1 or 2 inch NPT or flanged pipeline connection
- Patented locking collet
- Integrated safety chain



## STV-T5 SERIES INSERTION TOOL

- Snap-in collet sets for use with multiple sizes of tubes and rods
- Non-telescoping design
- Up to 42 inch (107 cm) travel length
- Ambidextrous operation
- Mechanical retraction for bent or jammed rods/shafts
- Sealed gears and bearing eliminate pinch points and reduce maintenance
- Lightweight aluminum construction
- Fully rebuildable



## SENTRY DPA SERIES

- 60 ml, 150 ml, 300 ml or 500 ml capacity
- 3600 psi (248 bar) MAP\*/MOP\*\* at 100°F (38°C)
- 316L SS construction (other alloys available)
- 1/2 inch or 3/4 inch NPT liquid sample valve and 1/4 inch or 1/2 inch NPT bleeder valve
- Corrosion coupon holder option



\* MAP: Maximum Allowable Pressure

\*\* MOP: Maximum Operating Pressure



## Sentry ProShield Lifecycle Services

Monitoring and managing corrosion also means reliable customer support throughout the life of your assets. Rely on full services and support for continuous optimal performance. Our experienced staff of expert technicians is available to provide on-site service and training as well as technical support and troubleshooting for all your products.

- **Customer service**—general inquiries, warranty claims, order management
- **Field service**—when a problem needs immediate attention
- **Replacements parts and consumables**—easily order your replacement parts and/or consumables
- **Technical support**—troubleshooting, training and technical manuals



## Any Application. Anywhere.

Serving customers  
in over 50 countries across  
six continents worldwide.



[sentry-equip.com](http://sentry-equip.com)

966 Blue Ribbon Circle North, Oconomowoc, WI 53066 U.S.A. | +1-262-567-7256 | [sales@sentry-equip.com](mailto:sales@sentry-equip.com)

© 2021 Sentry Equipment Corp. All rights reserved. Sentry and Safe-T-Vise are registered trademarks of Sentry Equipment Corp. All product and company names are property of their respective owners.

S-CM-BRO-00499-3 11-21